

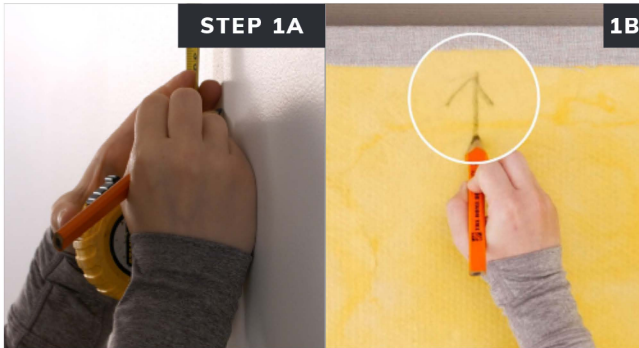
READ THIS BEFORE INSTALLING

Installation Instructions for your new FabriSorb Panels

Step-by-Step Installation

(RSO1) Rotofast™ Snap-On Anchor

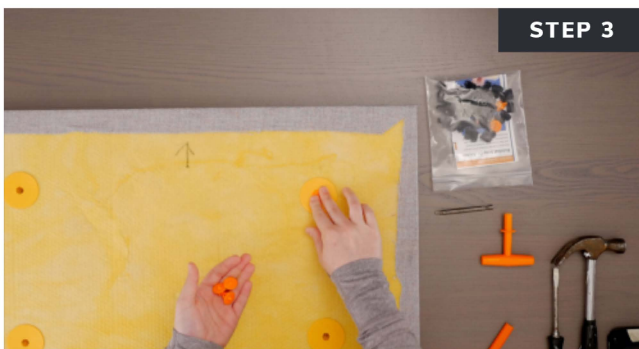
Rotofast Snap-On Anchors are a secure and fast solution for acoustical panel installation.



Measure and mark the location where panel will be placed and mark the orientation on the back of the panel.



Screw Rotofast Snap-On Anchors into back of the panel using the Rotofast driver tool. Do not over-tighten.



Insert reusable marking plugs into the Snap-On anchors.

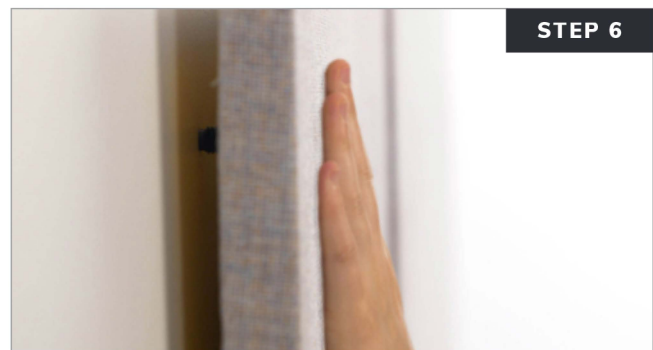


Push panel against wall to mark anchor locations.



Screw ratchets to wall at marked locations. Flat end of ratchet goes against the wall, curved end faces out.

#8 screws recommended
*Hollow wall anchors are recommended for drywall applications.



Firmly strike panel onto ratchets to complete the installation.

Ask your panel manufacturer or Rotofast representative for recommended anchor locations and quantities per panel.